

**MGSA – Mid Georgia Soaring Association**  
**GLIDER TOW OPERATIONS - TOST TOW WINCH**

**Tow Cable End Piece - Securing End of Rope with Knot:**

1. Wrap one layer of electric tape around the rope end and cut it off clean.



2. Push the rope end through the cable end piece.

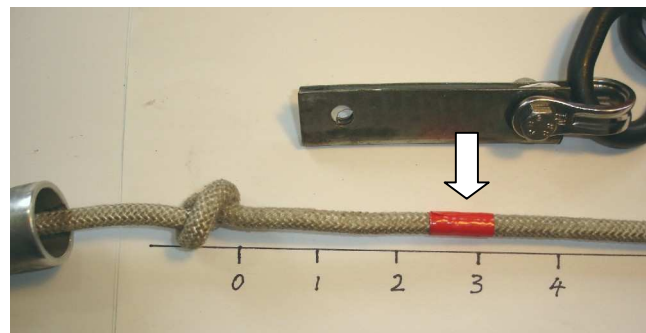
3. Tie an overhand knot about 5-6" from the end.

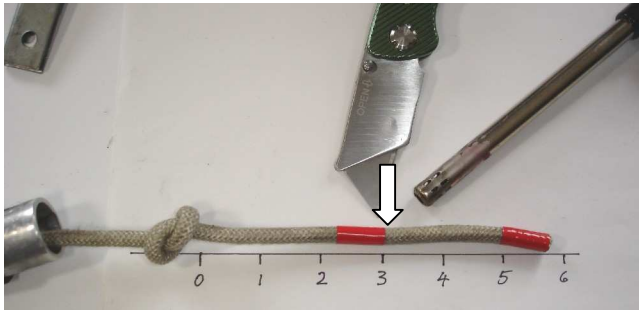


4. Pull the knot tight using a pliers and your fist. You can use a pliers to squeeze the knot tighter, but be careful not to damage the rope.



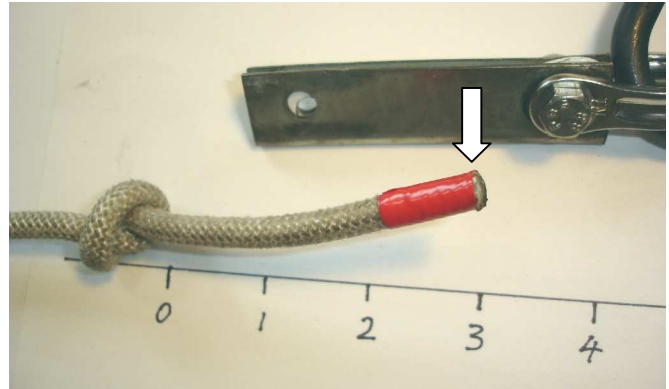
5. Apply electrical or fabric tape around rope about 3" from the knot.





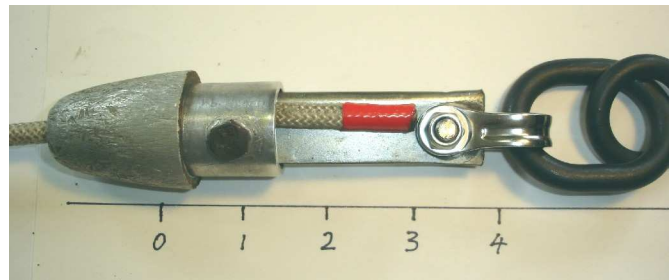
6. Cut rope at the edge of the tape, away from the knot.

7. Fuse the end of the rope with heat gun or flame to prevent fraying.



8. **NOTE:** The holes in the aluminum cable end piece and the clear plastic tube are "off center". This is necessary for correct mounting of the weak link assembly.

9. Pull the rope inside the cable end piece, install the clear plastic tube, the weak link assembly and the bolt. Secure the bolt with the lock nut.  
Make sure that the holes in the cable end piece are lined up with the holes in the clear plastic tube.  
The rope end should go through the larger part of the end piece, above the bolt.



10. This shows the finished cable end piece assembly. The rope end will retract about  $\frac{1}{2}$ " after the first tow. It is still easy to verify that the rope end has not been pulled to far in.

**This can happen if you do not follow this procedure.  
The end can unravel,  
allowing the knot to untie.  
And eventually to pull the rope end all the way through the knot.**



**And this is how it looks when the glider tire rolls over the rope end.**

